

# AVAILABLE RETAIL SPACE

## BI-LO Shopping Center - 720 Main Street

### North Myrtle Beach, South Carolina



**Hughes Commercial Properties, Inc.**

935 South Main St.  
Suite 202  
Greenville, SC 29601

864-233-0079 (Phone)

864-233-2093 (Fax)

For more information  
contact:

**Greg Carter**

**Cortney Carter**



### DEMOGRAPHICS

	1-Mile	3-Miles	5-Miles
Population 2011 Estimate	4,136	16,743	33,208
Growth 2000 – 2011	56.90%	44.30%	47.49%
2011 Est. Avg. Household Income	\$51,852	\$54,406	\$57,150

No Warranty or representation, expressed or implied is made as to the accuracy of the information contained herein and same is submitted subject to errors, omissions, change of price, rental or other conditions, withdrawal without notice and to any special listing conditions imposed by our principals.

# AVAILABLE RETAIL SPACE

## BI-LO Shopping Center - 720 Main Street

### North Myrtle Beach, South Carolina



**Hughes Commercial  
Properties, Inc.**

935 South Main St.  
Suite 202  
Greenville, SC 29601

864-233-0079 (Phone)

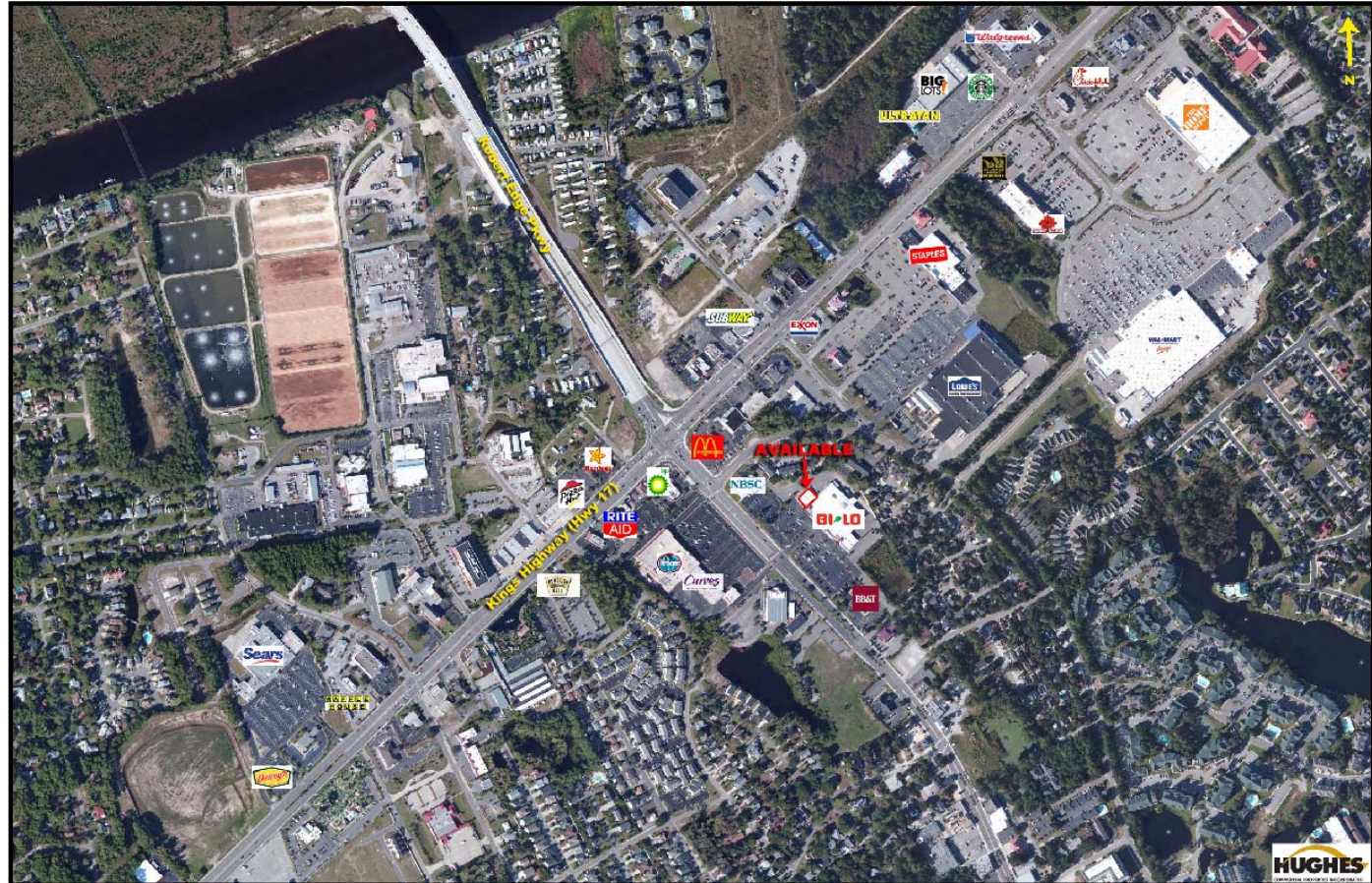
864-233-2093 (Fax)

For more information  
contact:

**Greg Carter**

**Cortney Carter**

[www.hughescommercial.com](http://www.hughescommercial.com)



## OFFERING HIGHLIGHTS

- **Space Available: 2,600 SF**
- **Co-tenants Include: BI-LO, UPS, Hair on Main, and Northstrand Ultrasound**
- **Pylon Signage Available**
- **Intersection of Hwy 17 & Robert Edge Pkwy**
- **VPD: 30,000**